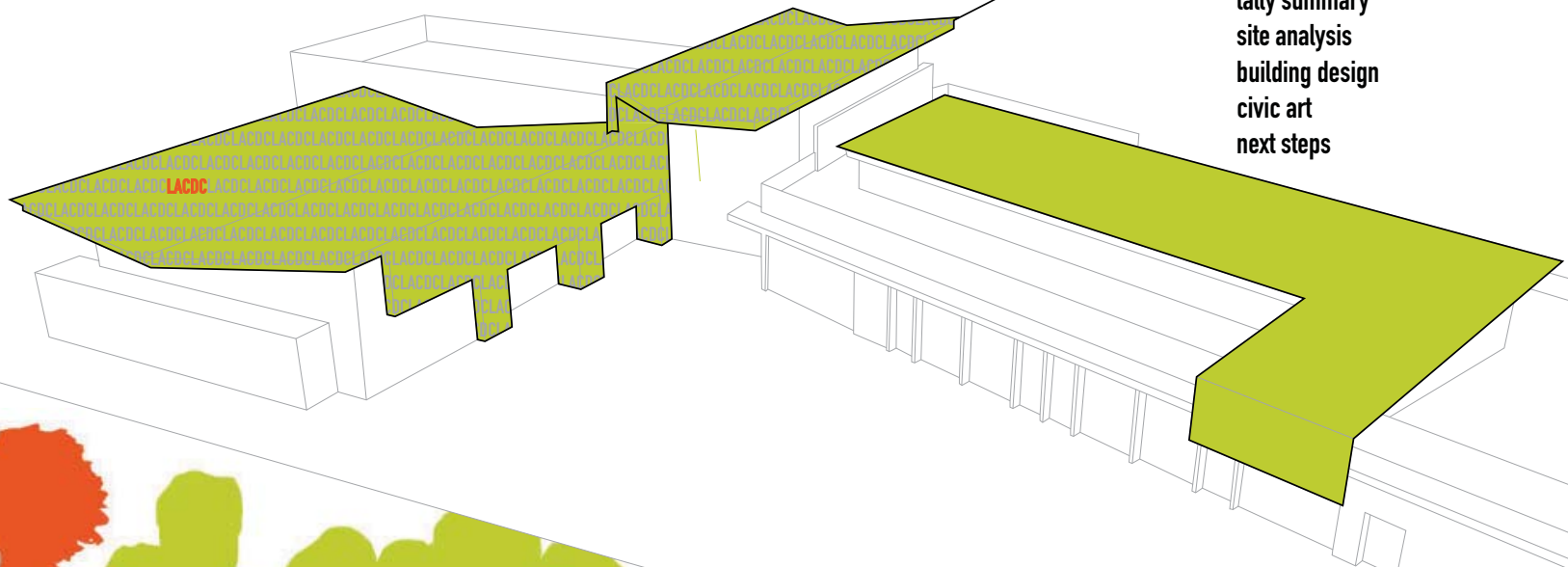




welcome & agenda

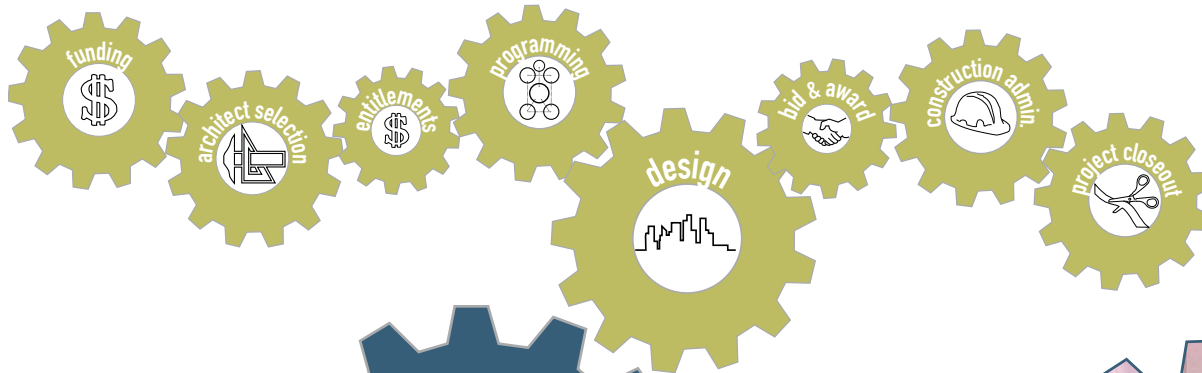
- project background
- tally summary
- site analysis
- building design
- civic art
- next steps



HMC Architects | los angeles community development commission

the process

In addressing the need for a community center for the unincorporated part of Whittier, certain stages in the process are critical for its successful completion. The process consists of funding, architect selection, entitlements, programming, designing, bidding and award, construction administration, and project closeout.



the workshops + community meetings

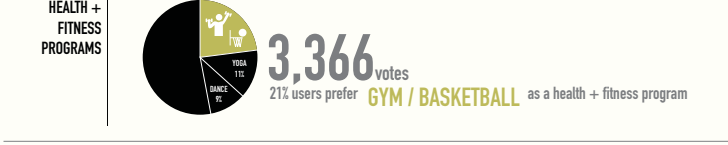
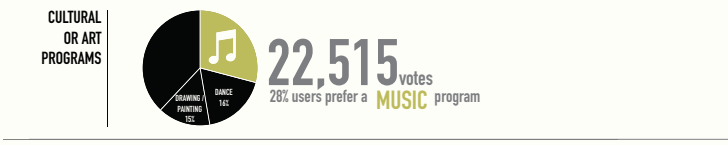
Within the process of programming and designing the community center, it was necessary to conduct workshops in order to reach out to the community's needs and concerns. These community outreach efforts informed the architect on how to effectively design the community center based on the client's and users' needs. Workshop activities included voting on images of indoor and outdoor spaces that reflected the users' needs and goals for their community.

the surveys

After the voting participation of the community in the workshops, surveys were further conducted to quantitatively deduce major concerns and needs from three participating age groups. Pre-adults, adults, and retirees were all asked for their contributions. These surveys and community involvement were crucial in determining a functional order and hierarchy of spaces to be part of the design of the community center.

THE TALLY SUMMARY

THE GUIDING PRINCIPLES



offer a **COMPREHENSIVE FITNESS CENTER** for indoor / outdoor activities

enhance **SOCIAL ENGAGEMENT** between the user groups of all ages

bridge the gap **COMMUNITY FACILITIES + SERVICES**

be rich in **CULTURAL ACTIVITIES + HEALTH AND FITNESS** programs

offer a **COMFORTABLE ENVIRONMENT** for spending time alone or with family + friends

provide a center that allows for **FLEXIBILITY + MULTI-PURPOSE** functions that focus on **PERSONAL + PROFESSIONAL DEVELOPMENT**

provide an environment which is **SAFE + SECURE**

TYPES OF HEALTH + FITNESS PROGRAMS

INDOOR HEALTH + FITNESS PROGRAMS

OUTDOOR HEALTH + FITNESS PROGRAMS



GYM
705 votes



YOGA
352 votes



DANCE
301 votes



MARTIAL ARTS
270 votes



STRENGTH TRAINING
201 votes



AEROBICS
195 votes



FITNESS/ NUTRITION CLASSES
187 votes



YOUTH EXERCISE
34 votes



MOMMY + ME
25 votes



GYMNASTICS
22 votes



FITNESS FOR THE DISABLED
7 votes



RACKETBALL
4 votes



PING PONG
2 votes



TEAM SPORTS
253 votes



JOGGING/ WALKING
216 votes



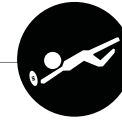
BASEBALL/ SOFTBALL
138 votes



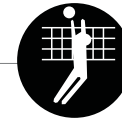
SWIMMING + WATER SPORTS
128 votes



SOCCER
107 votes



FOOTBALL
57 votes



VOLLEYBALL
42 votes



BIKING CLUB
40 votes



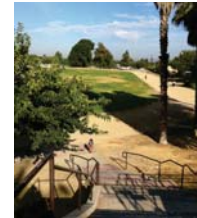
TENNIS
23 votes

TOTAL: 3366 votes



ZONE R-A-6000

22.20.430
PARKING LOT AS TRANSITIONAL USE ALLOWED
COMMUNITY CENTER NOT ALLOWED



ZONE C3-BE

22.28.180
COMMUNITY CENTER ALLOWED



ZONE A1

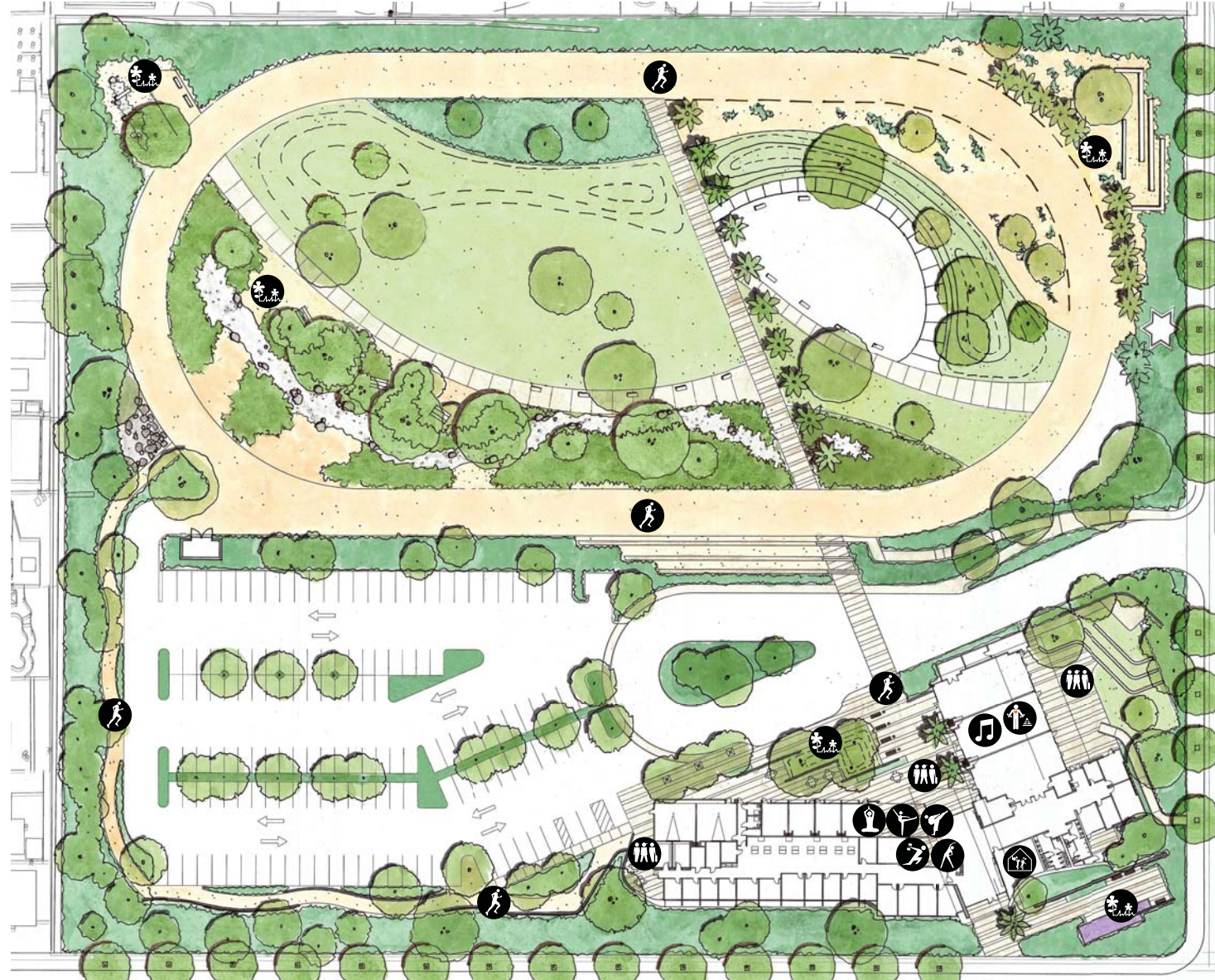
22.24.090
PARKING LOT AS TRANSITIONAL USE ALLOWED
COMMUNITY CENTER NOT ALLOWED

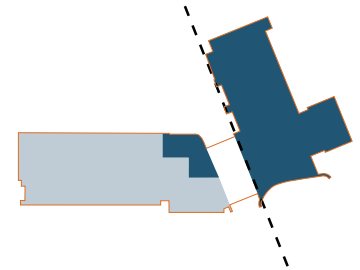




TOP 11 INDOOR + OUTDOOR PROGRAMS ON SITE

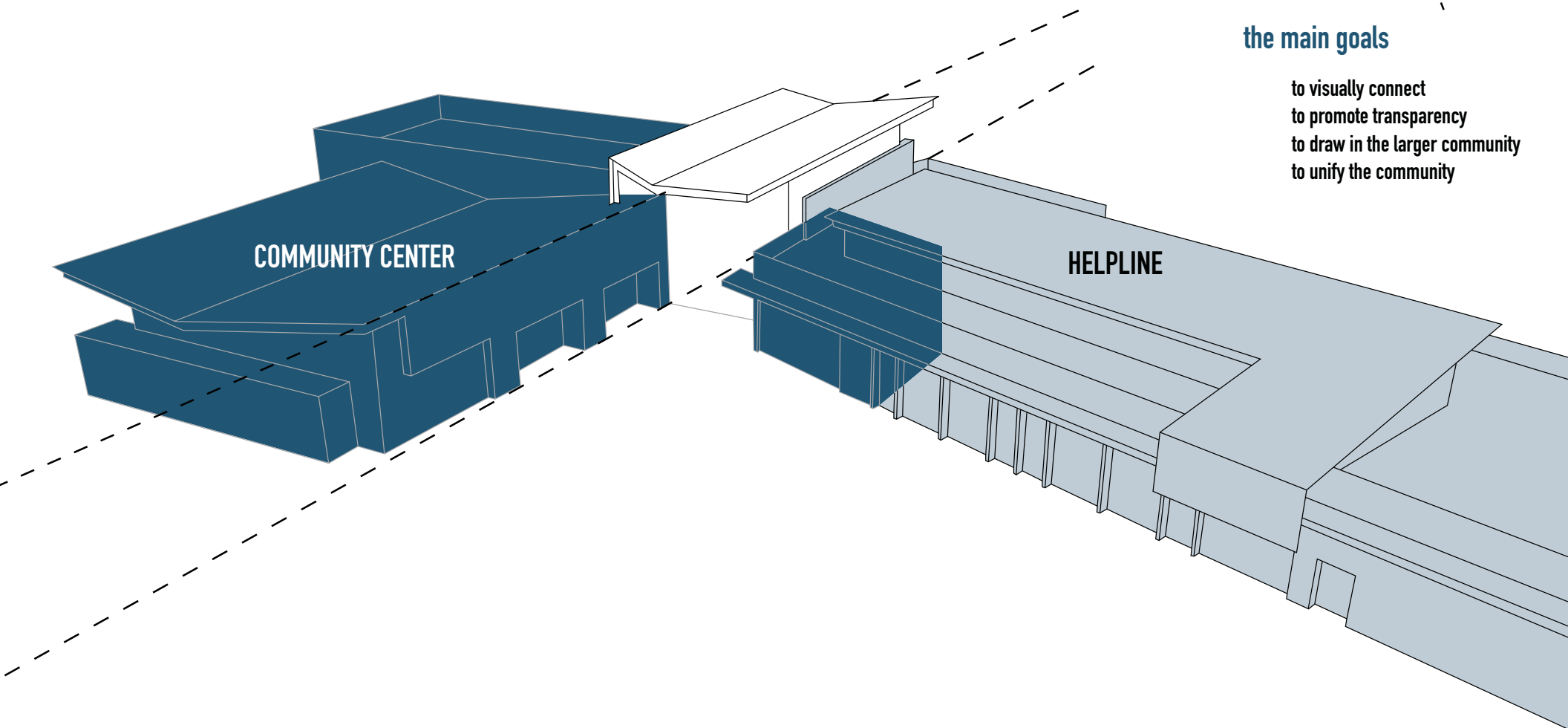
- #1 **MUSIC**
22,515 votes
- #2 **HANG OUT**
9,448 votes
- #3 **YOUTH CENTER**
1,783 votes
- #4 **YOGA**
352 votes
- #5 **DANCE**
301 votes
- #6 **MARTIAL ARTS**
270 votes
- #7 **LANDSCAPE /GARDENS**
269 votes
- #8 **JOGGING/ WALKING**
216 votes
- #9 **STRENGTH TRAINING**
201 votes
- #10 **AEROBICS**
195 votes
- #11 **FITNESS/ NUTRITION CLASSES**
187 votes





the main goals

- to visually connect
- to promote transparency
- to draw in the larger community
- to unify the community



PROGRAMMATIC DIAGRAM

INDOOR PROGRAM



EDUCATIONAL GARDENS

native planting
educational signage / learning opportunities



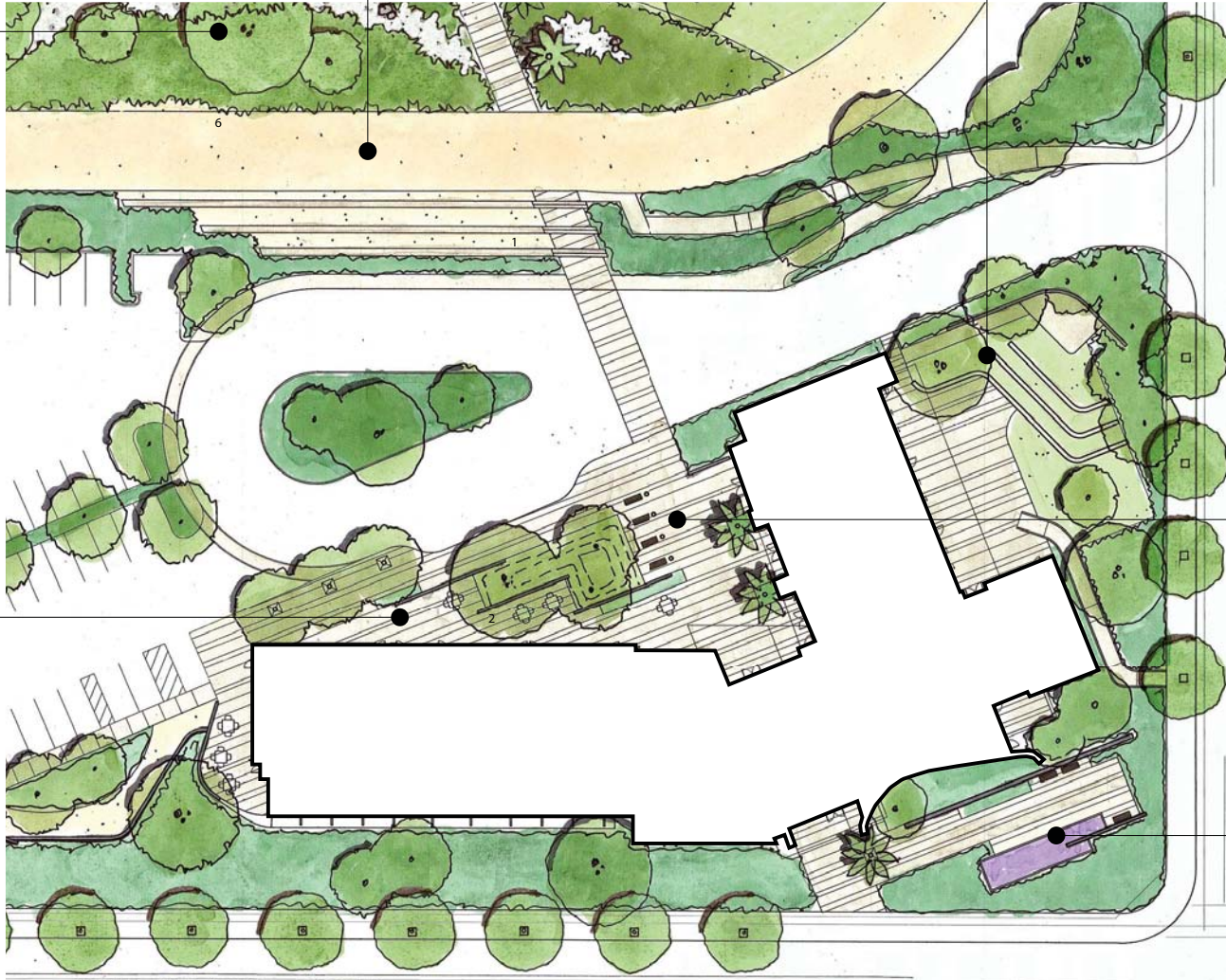
COURTYARD

shade trees
seating area



WALKING TRAIL + CONNECTING PATH

connecting points of interest throughout the site
views into children's play area



OUTDOOR PATIO + AMPHITHEATER

amphitheater and stage
grass steps for seating
strong connection to MPR for indoor/
outdoor events

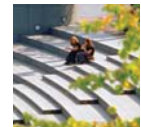


COMMUNITY COURTYARD

gathering area
main entry to building
seating areas



VETERANS GARDEN + CIVIC ART AREA





** Landscape and site design still under development





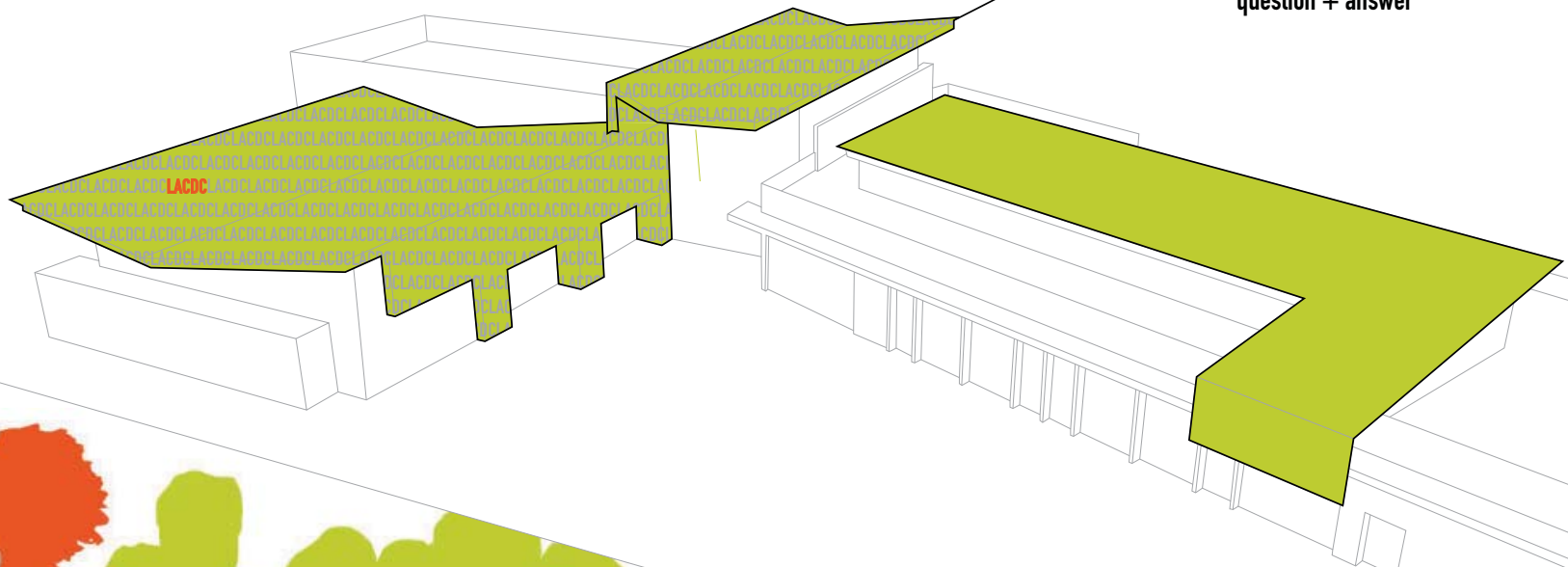






thank you!

closing comments
question + answer



HMC Architects | los angeles community development commission